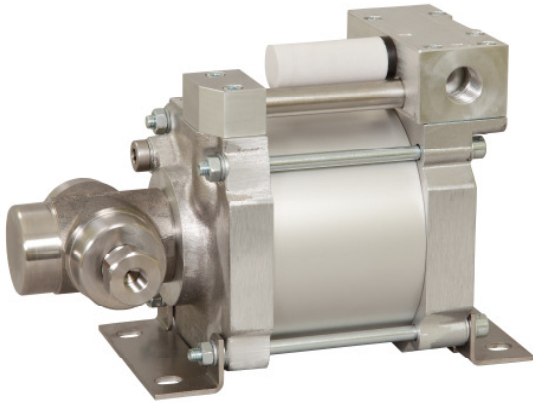


### Technical Data Sheet

### S80 SS

» Water service



S80-SS  
single acting, single air drive head

#### Technical Data:

Air drive pressure: 1-10 bar / 14,5 - 145psi

Calculated Outlet Pressure at an air drive of 10 bar/145 psi: 800 bar/ 11.600 psi

Pressure ratio: 1:80

Displacement volume/double stroke 6,2 cm<sup>3</sup>/ 0.37 cu.inch

#### Connections:

Inlet: 3/8" BSP

Outlet: 3/8" BSP

Air drive: 1/2" BSP

Maximum operating temperature: 60°C

Net weight: 7 kg

Pressure and flow performances, please see enclosed graph.

#### Wetted materials of construction:

Top cap: Aluminium

Air cylinder: Aluminium

Seal package: UHMWPE, FKM

Pump Body: 1.4313

HP Piston: 1.4112 (hardened)

#### Approximate Dimensions:

Height: 272 mm

Depth: 179 mm

Width: 135 mm

#### Available Accessories:

Air control units with filter pressure regulator, control pressure gauge and shut off valve: S80-SS with C1.5

To protect the pump against excessive outlet pressures or to limit the outlet pressure, a safety valve S80-SS with C1.5/SVair (The required outlet pressure has to be indicated.) can be fitted to the air control unit in the air drive line:

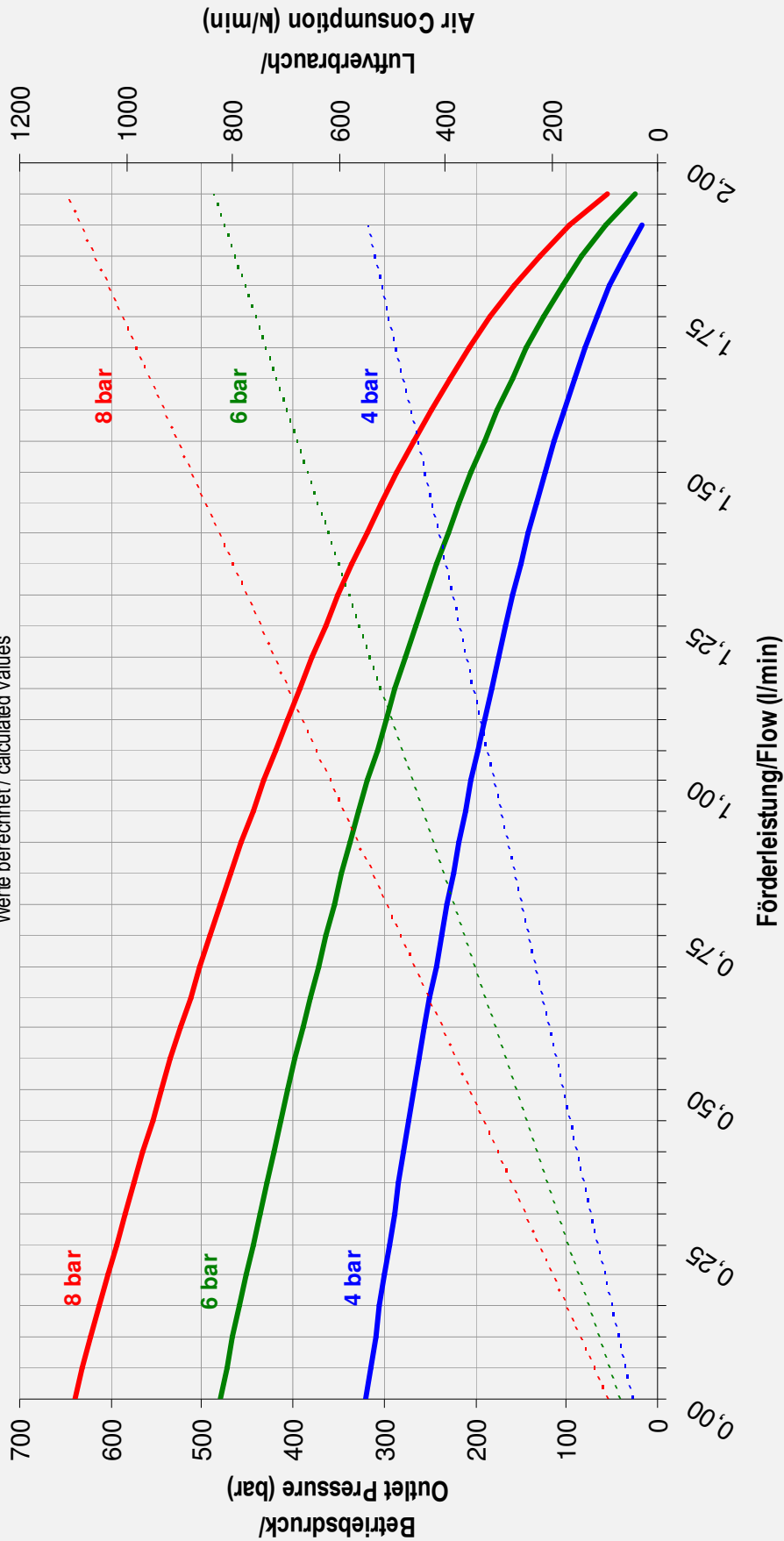
**Please consult factory for more information.** All technical and dimensional information subject to change. All General Terms and Conditions of sale, including limitations of our liability, apply to all products and services sold.



### Leistungsdiagramm/Performance Graph S 80 SS

Prüfflüssigkeit/Test Liquid: Wasser-Öl-Emulsion/Water Oil Emulsion ca. 1 - 10 cst

Werte berechnet/ calculated values



- Betriebsdruck bei/Outlet Pressure at 4 bar
- Betriebsdruck bei/Outlet Pressure at 8 bar
- Betriebsdruck bei/Outlet Pressure at 6 bar
- - - Luftverbrauch bei/Air consumption at 4 bar
- - - Luftverbrauch bei/Air consumption at 8 bar
- - - Luftverbrauch bei/Air consumption at 6 bar