

MAXIMATOR®

Maximum Pressure.

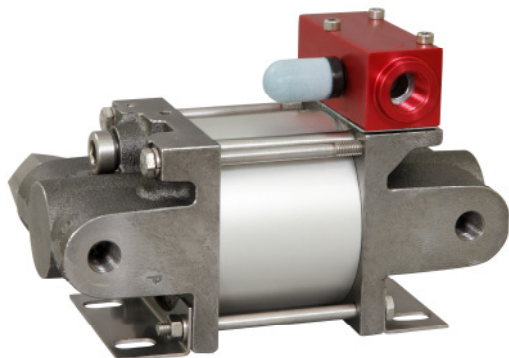


High Pressure Technology • Testing Equipment
Hydraulics • Pneumatics

Technical Data Sheet

MO189D

» Oil service



MO189D
double acting, single air drive head
(Standard= Side inlet)

Technical Data:

Air drive pressure:	1-10 bar / 14,5 - 145psi
Calculated Outlet Pressure at an air drive of 10 bar/145 psi:	1,000 bar/ 14,504 psi
Pressure ratio:	1:220
Displacement volume/double stroke	1.2 cm ³ / 0.07 cu.inch

Connections:

Inlet:	3/8 BSP
Outlet:	1/4 BSP
Air drive:	3/8 BSP
Maximum operating temperature:	60°C
Net weight:	4.5 kg

Pressure and flow performances, please see enclosed graph.

Wetted materials of construction:

Top cap:	Aluminium
Air cylinder:	Aluminium
Seal package:	Polyurethane, NBR
Pump Body:	GGG50
Piston:	1.4112 (hardened)

Approximate Dimensions:

Height:	228 mm
Depth:	102 mm
Width:	80 mm

Available Options:

Special inlet and outlet ports, i.e. NPT	MO189D-NPT
Special seal material to handle special fluids on request.	

Available Accessories:

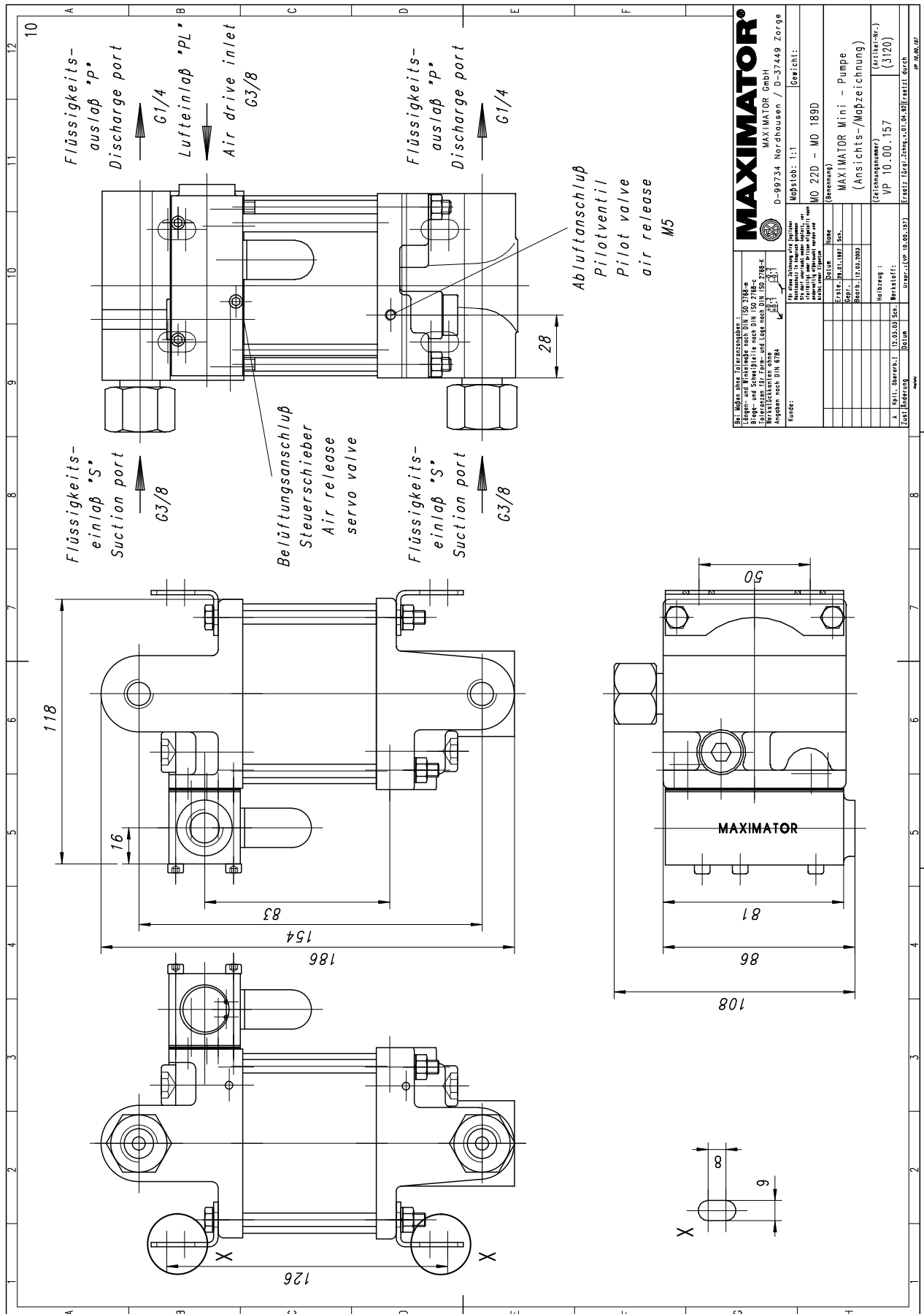
Air control units with filter pressure regulator, control pressure gauge and shut off valve:	MO189D with C1
To protect the pump against excessive outlet pressures or to limit the outlet pressure, a safety valve can be fitted to the air control unit in the air drive line:	MO189D with C1/SVair (The required outlet pressure has to be indicated.)

Please consult factory for more information. All technical and dimensional information subject to change. All General Terms and Conditions of sale, including limitations of our liability, apply to all products and services sold.

MAXIMATOR® Maximum Pressure.



High Pressure Technology • Testing Equipment
Hydraulics • Pneumatics



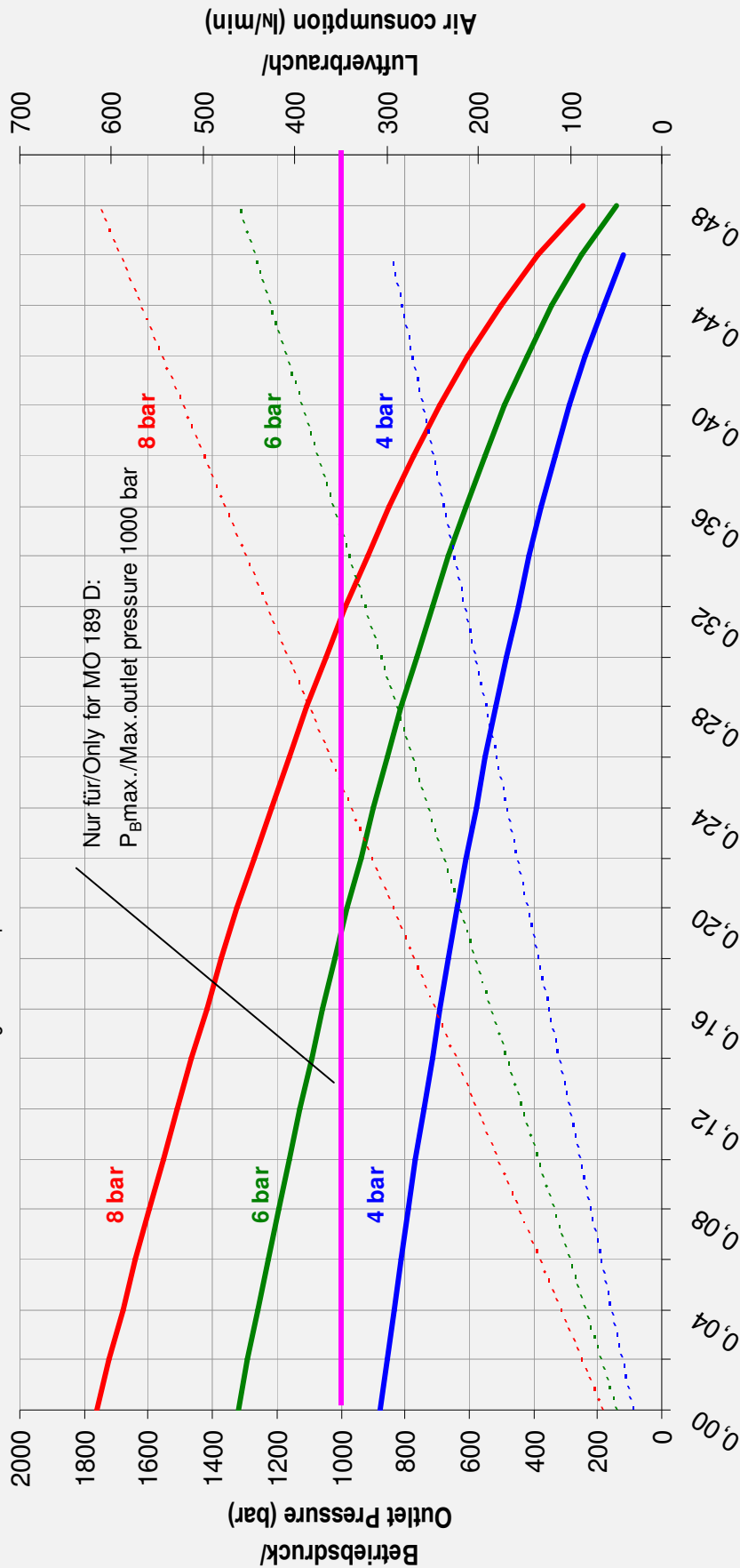
MAXIMATOR®	
MAXIMATOR GmbH D-99734 Nordhausen / D-37449 Zorge	
Für alle Zeichnungen gilt: Die Maße sind in mm anzugeben. Alle Maße sind nach DIN ISO 2768-mS angewendet, wenn nicht anders angegeben.	Alle Maße sind in mm anzugeben. Alle Maße sind nach DIN ISO 2768-mS angewendet, wenn nicht anders angegeben.
Erstfertigungsdatum: 12.03.2003	
Zust./Instandhaltung: Datum: 12.03.03 Sch.	
Menge: 10	
No. Zeichnung: 10.00.157	
Menge: 10	
Menge: 10	
Menge: 10	
Menge: 10	
Menge: 10	



High Pressure Technology • Testing Equipment
Hydraulics • Pneumatics

Leistungsdiagramm/Performance Graph M(O) 189 D

Prüfflüssigkeit/Test Liquid: Wasser-Öl-Emulsion/Water Oil Emulsion ca. 1 - 10 cSt



- Betriebsdruck bei/Outlet Pressure at 4 bar
- Betriebsdruck bei/Outlet Pressure at 6 bar
- Betriebsdruck bei/Outlet Pressure at 8 bar
- Luftverbrauch bei/Air consumption at 4 bar
- Luftverbrauch bei/Air consumption at 6 bar
- Luftverbrauch bei/Air consumption at 8 bar