

# MAXIMATOR®

## Maximum Pressure.

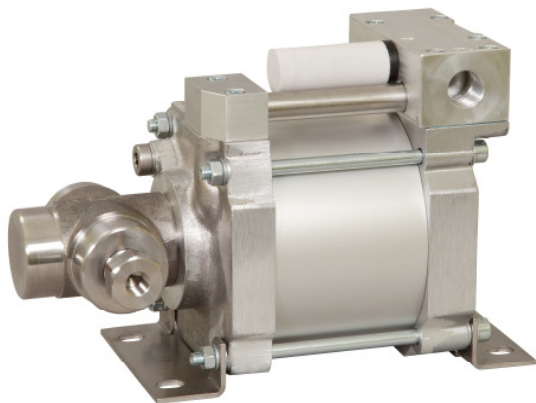


High Pressure Technology • Testing Equipment  
Hydraulics • Pneumatics

### Technical Data Sheet

S40 SS

» Water service



S40-SS  
single acting, single air drive head

#### Technical Data:

Air drive pressure:	1-10 bar / 14,5 - 145psi
Calculated Outlet Pressure at an air drive of 10 bar/145 psi:	390 bar / 5,650 psi
Pressure ratio:	1:39
Displacement volume/double stroke	12,6 cm <sup>3</sup> / 0.76 cu.inch

#### Connections:

Inlet:	3/8" BSP
Outlet:	3/8" BSP
Air drive:	1/2" BSP
Maximum operating temperature:	60°C
Net weight:	7 kg

Pressure and flow performances, please see enclosed graph.

#### Wetted materials of construction:

Top cap:	Aluminium
Air cylinder:	Aluminium
Seal package:	UHMWPE, FKM
Pump Body:	1.4313
HP Piston:	1.4112 (hardened)

#### Approximate Dimensions:

Height:	272 mm
Depth:	179 mm
Width:	135 mm

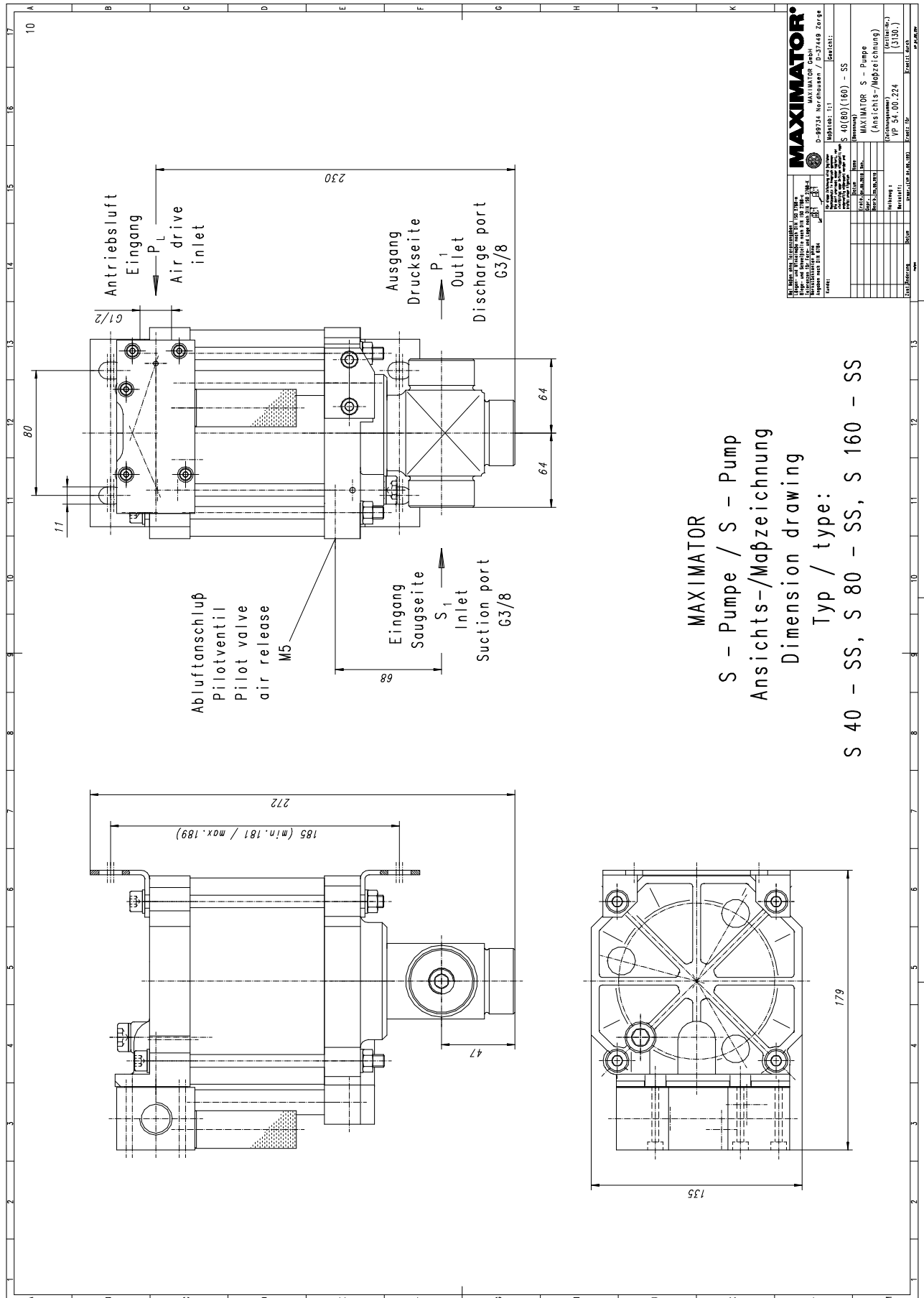
#### Available Accessories:

Air control units with filter pressure regulator, control pressure gauge and shut off valve:	S40-SS with C1.5
To protect the pump against excessive outlet pressures or to limit the outlet pressure, a safety valve can be fitted to the air control unit in the air drive line:	S40-SS with C1.5/SVair (The required outlet pressure has to be indicated.)

**Please consult factory for more information.** All technical and dimensional information subject to change. All General Terms and Conditions of sale, including limitations of our liability, apply to all products and services sold.



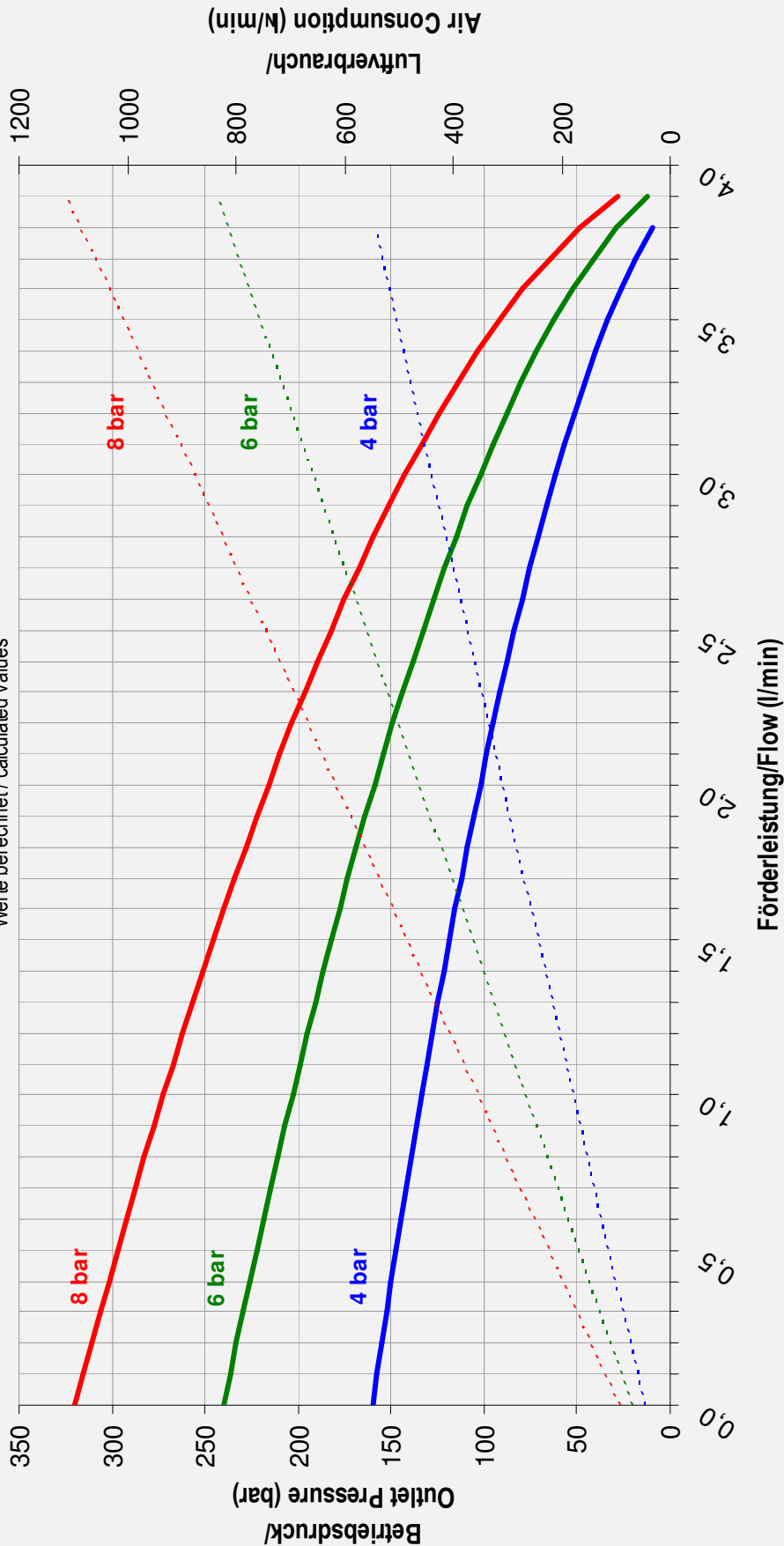
High Pressure Technology • Testing Equipment  
Hydraulics • Pneumatics



### Leistungsdiagramm/Performance Graph S 40 SS

Prüfflüssigkeit/Test Liquid: Wasser-Öl-Emulsion/Water Oil Emulsion ca. 1 - 10 cst

Werte berechnet/ calculated values



- Betriebsdruck bei/Outlet Pressure at 4 bar
- Betriebsdruck bei/Outlet Pressure at 6 bar
- Betriebsdruck bei/Outlet Pressure at 8 bar
- - - Luftverbrauch bei/Air consumption at 4 bar
- - - Luftverbrauch bei/Air consumption at 6 bar
- - - Luftverbrauch bei/Air consumption at 8 bar