

MAXIMATOR®

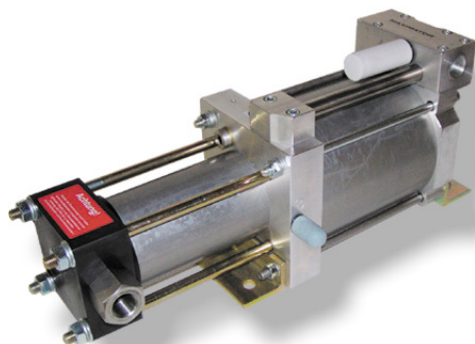
Maximum Pressure.



High Pressure Technology • Testing Equipment
Hydraulics • Pneumatics

Technical Data Sheet

Air Amplifier SPLV 3



Benefits

- Direct pressure increase for a single application
- No energy consumption by the air amplifier when the outlet pressure is reached
- Non electrical installation, so application in ex areas possible

Technical Data:

Inlet pressure:	1 to 32 bar
Outlet pressure:	max. 32 bar
Pressure ratio:	1:3,2
Medium:	Compressed air, nitrogen
Air Drive Pressure	1 to 10 bar

Connections:

Inlet:	1/2" BSP
Outlet:	1/2" BSP
Air drive:	1/2" BSP
Maximum operating temperature	60°C
Net weight:	8.5 kg

Pressure and flow performances, please see enclosed graph.

Materials of construction hp section:

Wetted material of construction:	light metal resp. stainless steel
Dynamic seals	special wear resisting PTFE (Teflon)
Accessories:	Air Control Unit C1.5 comprising of combined filter pressure regulator, control pressure gauge, shut-off valve

Packaged Amplifier Systems: SPLV3 / 20 liter / 16 bar

Comprising:

- Air amplifier SPLV3
- Filter regulator with shut-off valve
- Receiver 20 Liter, 16 bar
- Safety valve 16 bar
- Outlet pressure gauge 0-16 bar, dia. 100 mm

The system comes completely mounted, pressure tested and ready for connection.

Order Code: 3230.1234 / AP201.127.02

Other available stations:

-SPLV3/ 3 Liter/ 30 bar:	Order code: 3230.1130 / AP201.116.09
-SPLV3/20 Liter/ 21 bar:	Order code: 3230.1241 / AP201.127.05
-SPLV3/40 Liter/ 21 bar:	Order code: 3230.1090 / AP201.127.37
-SPLV3/40 Liter/ 40 bar:	Order code: 3230.1236 / AP201.127.04



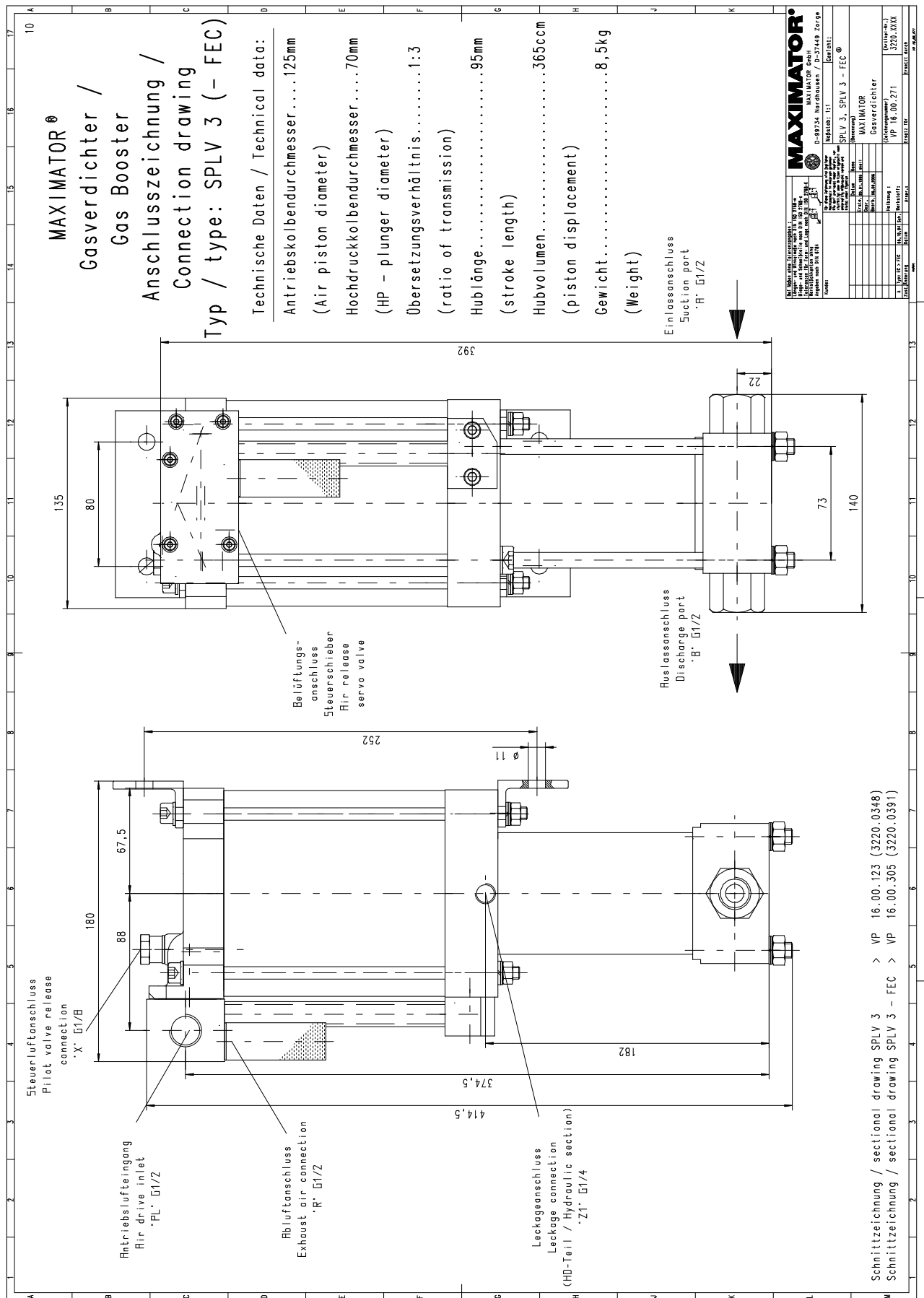
Please consult factory for more information. All technical and dimensional information subject to change. All General Terms and Conditions of sale, including limitations of our liability, apply to all products and services sold.

MAXIMATOR®

Maximum Pressure.



High Pressure Technology • Testing Equipment
Hydraulics • Pneumatics



MAXIMATOR®

Maximum Pressure.



High Pressure Technology • Testing Equipment
Hydraulics • Pneumatics

Performance Graph SPLV 3

For air demand add together outlet flow and air consumption

