

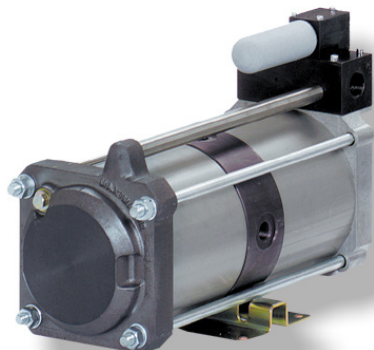
MAXIMATOR®

Maximum Pressure.



High Pressure Technology • Testing Equipment
Hydraulics • Pneumatics

Technical Data Sheet



Benefits

- Direct pressure increase for a single application
- No energy consumption by the air amplifier when the outlet pressure is reached
- Non electrical installation, so application in ex areas possible

Air Amplifier GPLV 2

Technical Data:

Inlet pressure:	1 to 10 bar
Outlet pressure:	2 to max. 20 bar
Pressure ratio:	1:2
Medium:	Compressed air, nitrogen

Connections:

Inlet:	1/2" BSP
Outlet:	1/2" BSP
Air drive:	1/2" BSP
Maximum operating temperature	60°C
Net weight:	20.5 kg

Pressure and flow performances, please see enclosed graph.

Materials of construction hp section:

Wetted material of construction:	light metal resp. stainless steel
Dynamic seals	special wear resisting PTFE (Teflon)
Accessories:	Air Control Unit C2 comprising of combined filter pressure regulator, control pressure gauge, shut-off valve

Available Options:

Air drive port	1/2 BSP
----------------	---------

Packaged Amplifier Systems: GPLV 2 / 3 liter / 16 bar

Comprising:

- Air amplifier GPLV2
- Filter regulator with shut-off valve
- Receiver 40 Liter, 16 bar
- Safety valve 16 bar
- Outlet pressure gauge 0-16 bar, dia. 50 mm

The system comes completely mounted, pressure tested and ready for connection.

Order Code: 3230.0349 / AP201.104.00

Other available stations:

-GPLV2/40 Liter/ 20 bar:	Order code: 3230.0394 / AP201.104.01
-GPLV2/ 3 Liter/ 16 bar:	Order code: 3230.0422 / AP201.119.00



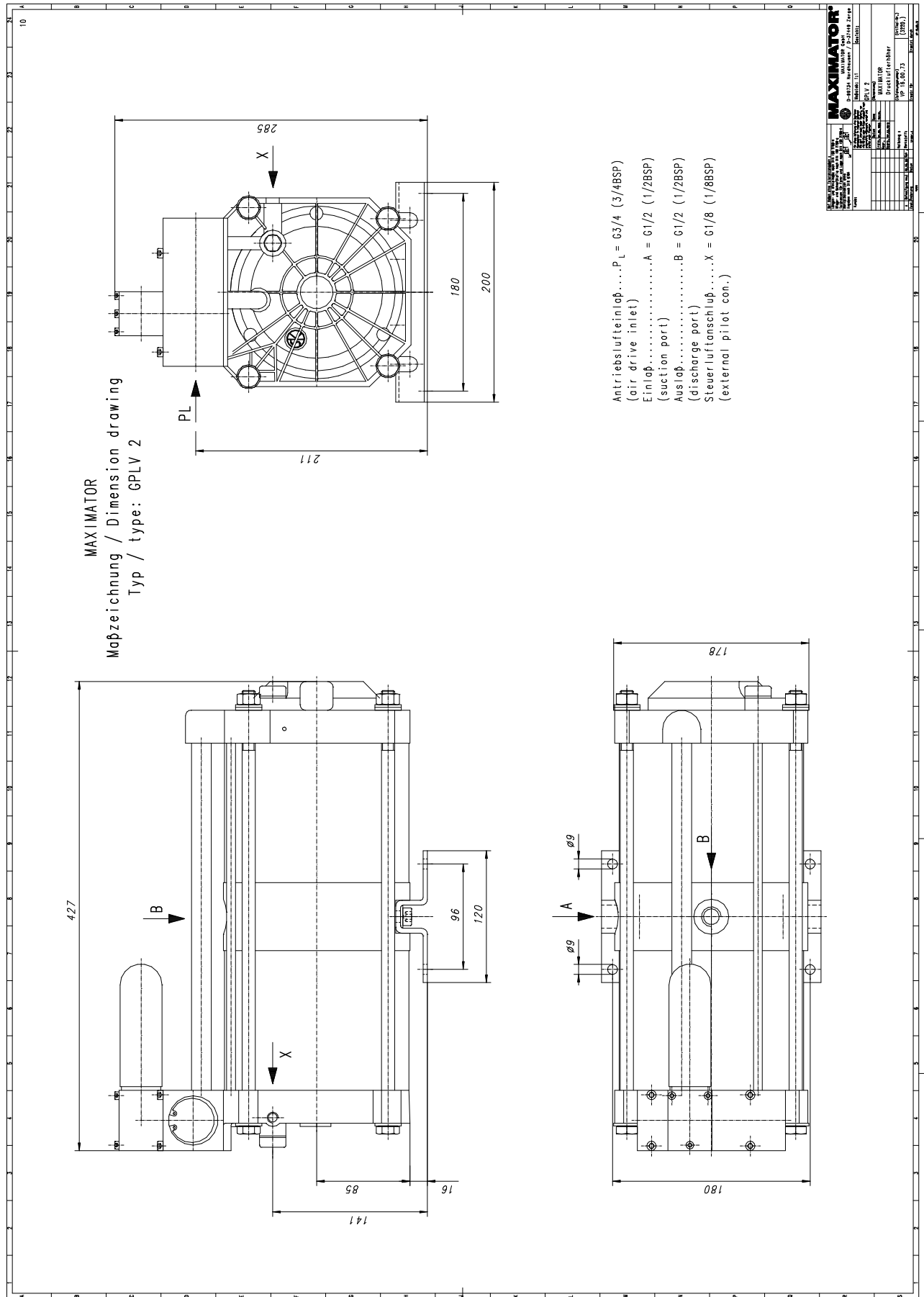
Please consult factory for more information. All technical and dimensional information subject to change. All General Terms and Conditions of sale, including limitations of our liability, apply to all products and services sold.

MAXIMATOR®

Maximum Pressure.



High Pressure Technology • Testing Equipment
Hydraulics • Pneumatics



MAXIMATOR®

Maximum Pressure.



High Pressure Technology • Testing Equipment
Hydraulics • Pneumatics

Performance Graph GPLV 2

For air demand add together outlet flow and air consumption

