

# MAXIMATOR®

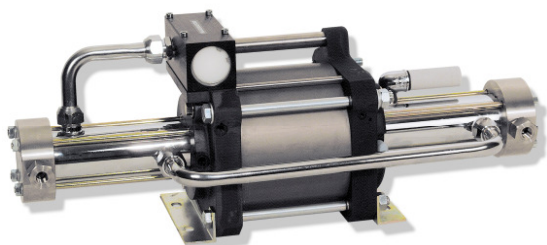
## Maximum Pressure.



High Pressure Technology • Testing Equipment  
Hydraulics • Pneumatics

### Technical Data Sheet

### Gas booster DLE 2



DLE 2  
double acting, single air drive head  
single stage

#### Technical Data:

Air drive pressure pL:	1-10 bar / 14,5 - 145psi
Pressure ratio i:	1:2
Compression ratio	1:10
Minimum suction pressure pA:	0
Maximum suction pressure pA:	40 bar
Maximum outlet pressure pB:	40 bar
Displacement volume/double stroke:	1,844 cm <sup>3</sup>
Maximum cycles:	90 / min
Stall pressure:	$PB = i \cdot pL + pA$

#### Standard Connections:

Air drive:	3/4 BSP
DLE 2 (-GG)	Inlet/Outlet: 1/2 BSP
Maximum operating temperature	60°C
Net weight:	20 kg

Pressure and flow performances, please see enclosed graph.

#### Materials of construction hp section DLE 2:

Standard seal package:	PTFE, Viton
Compressor head:	Aluminium anodised
HP cylinder:	Aluminium hardcoated
HP piston:	1.4305
Fittings:	1.4305
Balls:	1.4034
Springs:	1.4310

#### Approximate Dimensions:

Length:	598 mm
Width:	181 mm
Height:	273 mm

#### Available Options:

Inert gas service (standard)	DLE 2 (-GG)
Oxygen service:	DLE 2-GG-S
CO <sub>2</sub> service:	DLE 2-GG-C
In-/Outlet: 1/4NPT	DLE 2-NN

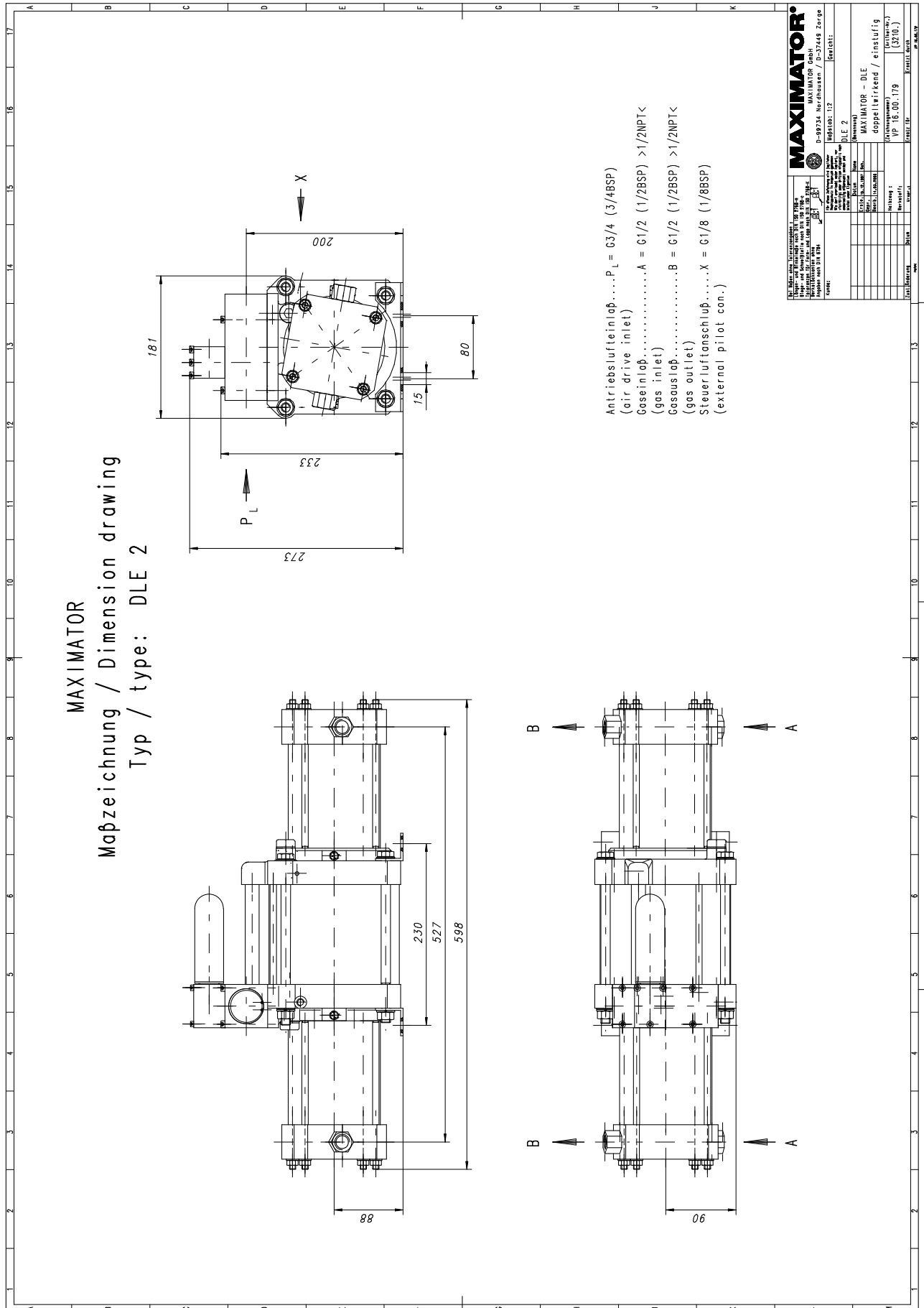
#### Available Accessories:

Air control units with filter pressure regulator, control pressure gauge and shut off valve:	DLE 2 with C2
To protect the booster against excessive outlet pressures or to limit the outlet pressure, a safety valve can be fitted to the air control unit in the air drive line:	DLE 2 with C2/SVair (The required outlet pressure has to be indicated.)

**Please consult factory for more information.** All technical and dimensional information subject to change. All General Terms and Conditions of sale, including limitations of our liability, apply to all products and services sold.



High Pressure Technology • Testing Equipment  
Hydraulics • Pneumatics



# MAXIMATOR®

## Maximum Pressure.



High Pressure Technology • Testing Equipment  
Hydraulics • Pneumatics

