

MAXIMATOR®

Maximum Pressure.



High Pressure Technology • Testing Equipment
Hydraulics • Pneumatics

Technical Data Sheet



DLE 30-75-3-36
double acting, tripple air drive head
two stages

Gas booster DLE 30-75-3-36

Technical Data:

Air drive pressure pL:	1-10 bar / 14,5 - 145psi
Pressure ratio i:	1:90 / 1:225
Compression ratio	1:50
Stage pressure ratio:	1:2.5
Minimum suction pressure pA:	30 bar
Maximum suction pressure pA:	30* air drive pressure pL
Maximum outlet pressure pB:	2,400 bar (36,000 psi)
Displacement volume/double stroke:	60 cm ³
Stall pressure:	PB = 225* pL + 225/90*pA

Standard Connections:

Air drive:	3/4 BSP
DLE 30-75-3-36 (-GU)	Inlet = 1/4BSP Outlet = 4H (9/16-18 UNF)

Maximum operating temperature	100°C
Net weight:	36 kg

Materials of construction hp section DLE 30-75-3-36:

Standard seal package:	PTFE, Viton
Compressor head:	1.4305 (DLE30)/ 1.4542 (DLE75)
HP cylinder:	1.4542
HP piston:	1.4305
Fittings:	1.4305 (DLE30)/ 1.4542 (DLE75)
Balls:	1.4034
Springs:	1.4310

Approximate Dimensions:

Length:	997 mm
Width:	210 mm
Height:	233 mm

Available Accessories:

Air control units with filter pressure regulator, control pressure gauge and shut off valve:	DLE 30-75-3-36 with C2
--	------------------------

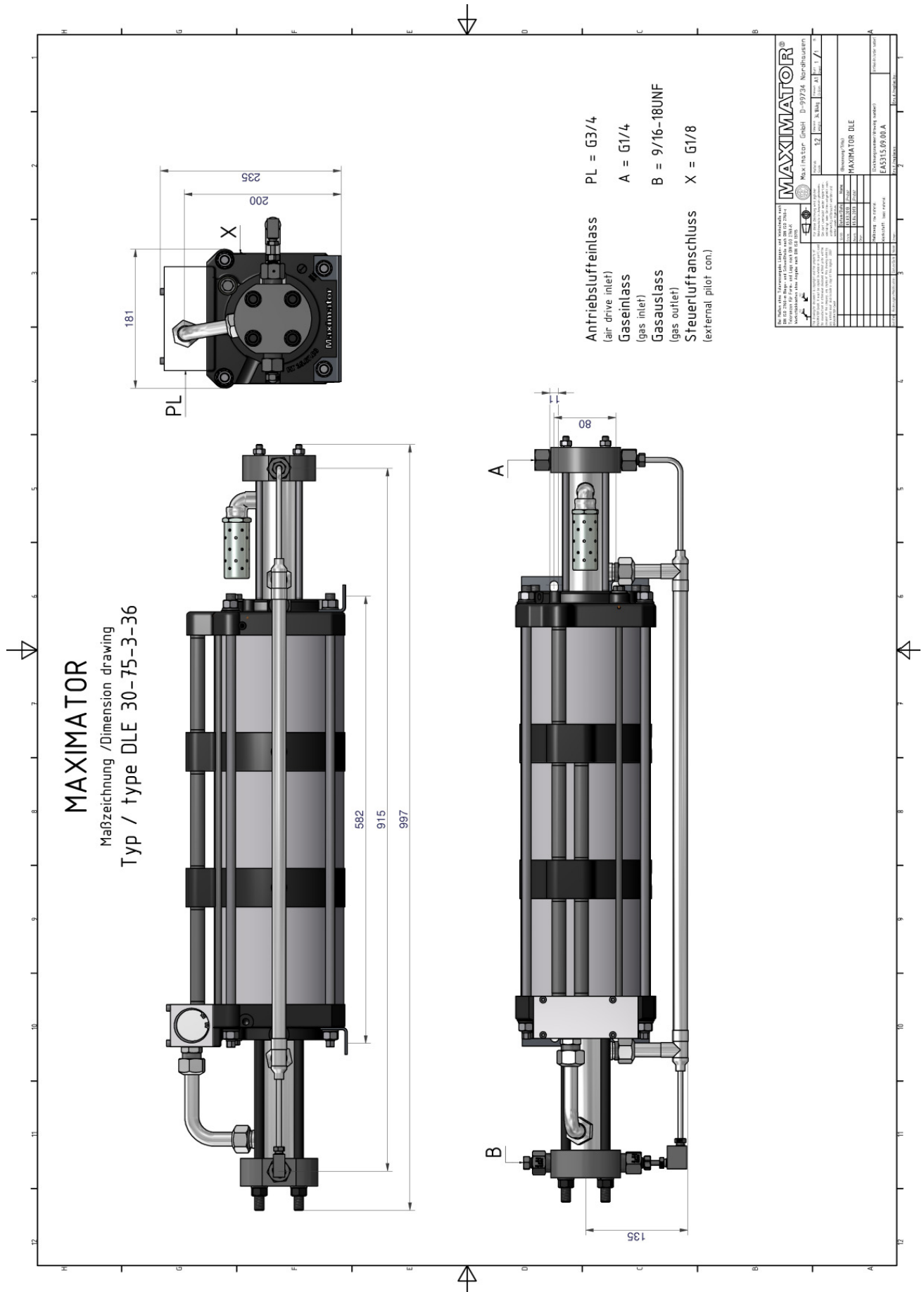
Please consult factory for more information. All technical and dimensional information subject to change. All General Terms and Conditions of sale, including limitations of our liability, apply to all products and services sold.

MAXIMATOR®

Maximum Pressure.



High Pressure Technology • Testing Equipment
Hydraulics • Pneumatics



MAXIMATOR®

Maximum Pressure.



High Pressure Technology • Testing Equipment
Hydraulics • Pneumatics

