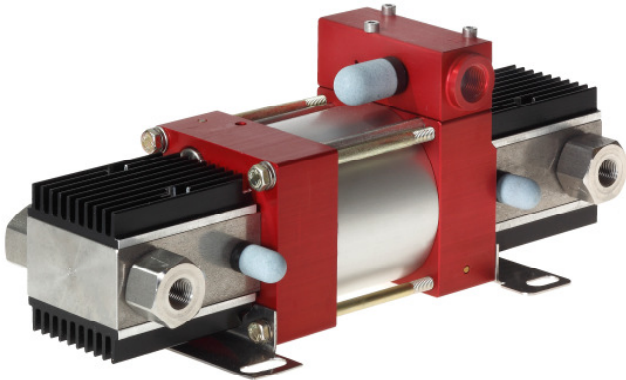




Technical Data Sheet	ROB 32 D	<u>R</u> ebreather <u>O</u> xygen <u>B</u> ooster
----------------------	-----------------	---



Technical Data:

Air drive pressure:	1-10 bar / 14,5—145 psi
Max. Outlet Pressure	300 bar/ 4,350 psi
formula for outlet pressure	$32 \times pA + pI$
Pressure ratio:	1:32
Displacement volume/double stroke	11,6 cm ³ / 0.7 cu.inch
Connections	
Inlet:	Standard: Side inlet 1/4 BSP
Outlet:	1/4 BSP
Air drive	3/8 BSP
Maximum operating temperature	60 °C
Net weight	approx. 5,4 kg
Inlet Pressure	50-300 bar / 725-4,350 psi
Average Flow*	280 NL/min

ROB 32 D
 Double acting, single air drive head and distance piece

Pressure and flow performances, please see enclosed graph.
 * The flow is depending on air drive and inlet pressure

Wetted materials of construction:		
	Seal package:	Filled Teflon (PTFE) Fluorcarbon (V)
	High Pressure Body:	1.4305
	Piston:	1.4112
	Fittings:	1.4571
Approximate Dimensions:		
	Height:	286 mm
	Depth:	122 mm
	Width:	109 mm
	Side inlet	Standard
Available Accessories		
Air control units type C1 with filter pressure regulator, control pressure gauge and shut off valve:	ROB 32 D with C1	
To protect the booster against excessive outlet pressures or to limit the outlet pressure, a safety valve can be fitted to the air control unit in the air drive line:	ROB 32 D with C1/SV air (The required outlet pressure has to be indicated.)	

Please consult factory for more information.

All technical and dimensional information subject to change. All General Terms and Conditions of sale, including limitations of our liability, apply to all products and services sold.



Filling time for a 3 Liter Bottle

Inlet Pressure \ Outlet Pressure	Outlet Pressure							
	75 bar	100 bar	125 bar	150 bar	175 bar	200 bar	225 bar	250 bar
50 bar	30 sec.	70 sec.	125 sec.	185 sec.	265 sec.	355 sec.	480 sec.	640 sec.
100 bar			15 sec.	30 sec.	50 sec.	70 sec.	95 sec.	120 sec.
150 bar					8 sec.	15 sec.	25 sec.	40 sec.

