

Product-Datasheet DBS-C

3-way-change over ball valve with socket

E	V10
	003
	State 03/09

Rudolf von Scheven GmbH
Wuppertaler Str. 10-12, 45549 Sprockhövel
www.von-scheven.com

Tel. + 49 (0)23 24 / 97 42 - 0
Fax + 49 (0)23 24 / 97 42 - 10
eMail sales@von-scheven.com

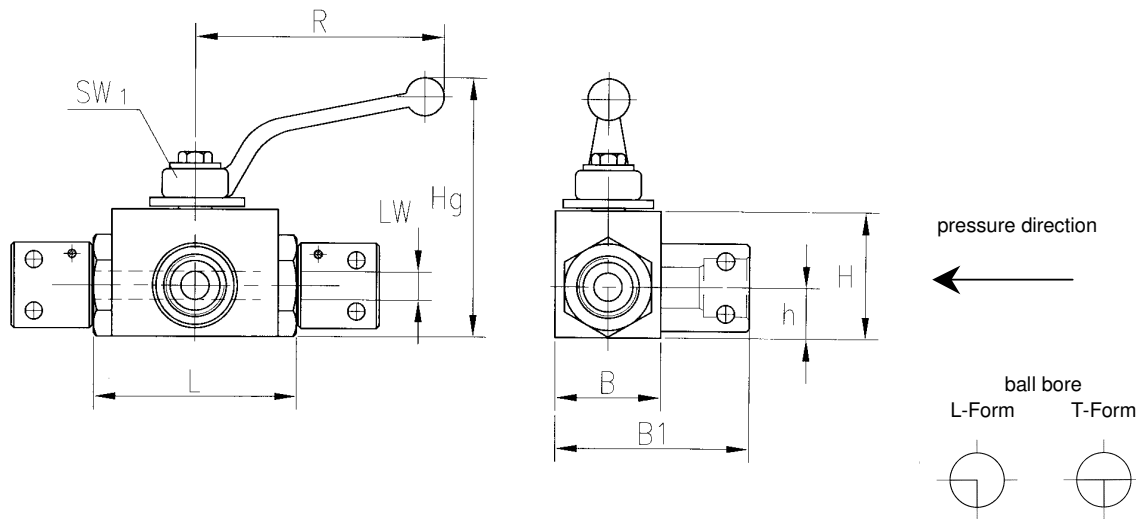


**3-way-change over
ball valve with
socket
steel**
DN 10 - 25
PN up to 500 bar



Type serie

16 - socket acc. to DIN 20043 on both sides



Technical data type series 16 (socket acc. to DIN20043)												
DN	IW	socket	PN	L	B	B1	H	h	Hg	R	SW1	weight kg
10	08	DN 10	500	143	35	56	40	15	92	112	10	0,6
12	10	DN 12	500	147	35	65	45	18	85	130	10	0,9
20	14	DN 20	315	130	45	70	55	24	95	130	10	1,4
25	20	DN 25	315	159	55	161	65	30	113	160	10	2,4

Ordering example: ball valve type DBS-C steel, DN10 with socket DN10 (please name the ball bore)
⇒ DBS-C 10 16

Product-Datasheet DBS-C

3-way-change over ball valve with socket



von Scheven

Armaturenfabrik und Apparatebau

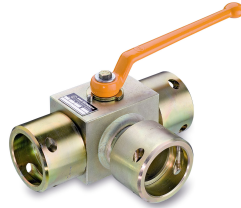
E	V10
	003
	State 03/09

Rudolf von Scheven GmbH
Wuppertaler Str. 10-12, 45549 Sprockhövel
www.von-scheven.com

Tel. + 49 (0)23 24 / 97 42 - 0
Fax + 49 (0)23 24 / 97 42 - 10
eMail sales@von-scheven.com

3-way-change over ball valve with socket steel

DN 10 - 25
PN up to 500 bar



Technical description

The ball valve type DBS-C consists of a block body with screwed-in connectors on each side. The spindle has an anti-blow-out design and is assembled from the outside. Due to the screwing, the seal of the spindle can easily be changed. The use of an actuator is possible with an extension set. This upgradeability is to be announced with your order (additional charge).

Application area:

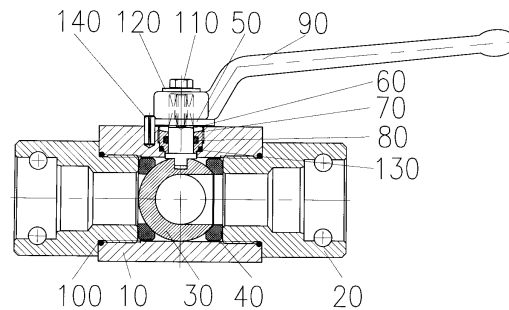
For non-aggressive fluids and gases. Furthermore, the resistiveness against the flow medium generally has to be given.

Allowed operating temperature: -10 °C up to +90 °C

Differing temperatures on request.

Bill of materials

Pos.	name	material	Wnr./DIN
10	body	11SMn30	1.0715
20	thread	11SMn30	1.0715
30	ball	11SMn30	1.0715
40	seal	POM	
50	stopp washer	steel	
60	spindle	11SMn30	1.0715
70	screwing	CuZn39Pb3	2.0401
80	o-ring	NBR	
90	hand lever	Z410	
100	o-ring	NBR	
110	screw		DIN EN ISO 2.4017
120	washer		DIN EN ISO 7093
130	O-Ring	NBR	
140	stop pin		DIN EN ISO 8740



Depending on the design, not all positions are used with every nominal diameter. In special types, several parts may be made of different materials.

If you have other demands, different from the here specified standard operational conditions, please feel free to request them separately.

In case of very low working pressure, use the low-pressure type with modified seals.

The operating and maintenance manual and in particular the safety instructions have to be followed!
They can be downloaded from www.von-scheven.com, as well as certificates and approvals.

All dimensions in mm.

Technical changes reserved.